

# CARL trim gears

## Materials:

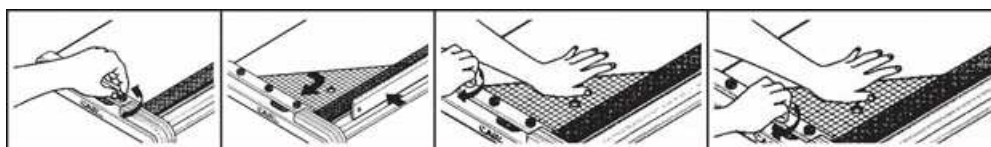
- Made in ABS, steel and aluminium
- Rubber feet for a perfect adhesion to the working surface

## Technical / functional features:

REF.	TG - 110	TG - 120
• <b>Maximum cut (mm):</b>	366 (B4)	442 (A3)
• <b>Cutting capacity:</b>	5 paper sheets (80 g/sqm) 1 photo printing paper (270 g/sqm) Resin films (thickness up to 0,35 mm)	
• <b>Sheet locking system:</b>	with graduated paper holder	
• <b>Adjuster guide:</b>	yes	
• <b>Colour:</b>	BLACK	
• <b>Weight (net/gross):</b>	1300 / 1850	1600 / 2120
• <b>Dimensions:</b>	cm 24,8 x 49,1 x 4,4 h	cm 24,8 x 56,7 x 4,4 h

**In addition:** CARL new trim gears work with a safe and innovative self-sharpening cutting device with a rotary blade. This allows you to obtain high quality results in the cutting capacity and cutting precision, which is very important not only for professional end-users. Thanks to their new design, their high performances and a fair price, they can be ideally employed in every office, where they are even more appreciated because they are light, practical and easy to use. One of the novelties is the spring mechanism, by which the **slider** automatically returns to its original position when your hand is off. The **cutting table** shows the DIN measures of the different paper sizes, for an easier and more precise positioning of the sheets to be cut.

It is possible to work on a bigger cutting table using the retractable sub-table. The **paper holder**, with graduations marked at intervals of 1 mm, starting at a position of 3 mm from the edge, allows to trim borders with extreme precision. Finally, the **guide** can be adjusted in order to obtain a perfect right angle on every occasion.



**Safety:** CARL trim gears fully meet the quality criterions established for machines which can be used everywhere in safety, at home, at school and in the office. What's more, with their self-sharpening cutting device, users do not have to replace the blade, so there is no risk for them to come in direct contact with it, not even accidentally!

CARL trim gear, manufactured by CARL MANUFACTURING CO., LTD. - TOKYO, are distributed in Italy exclusively by **BALMA, CAPODURI & C. s.p.a.**, which assures a **good after-sale service too.**